

# Pay the fine Keep your freedom

You have not paid your fine in the canton of Zurich. So you have to go to prison. Do not want to? You have two options:

**01**

Pay  
your fine

---

**02**

Or work off  
your fine

---



# 01 Pay your fine



## **Get it done. Pay your fine today.**

You have until the date when you would have to go to prison. The date is on the summons ('Vorladung'). Check page one, under 'Strafantritt' (it is the white document). You can find the payment slip at the end of the summons document.

**Have a question about your fine? Give us a call: 043 258 36 59**

# 02 Or work off your fine



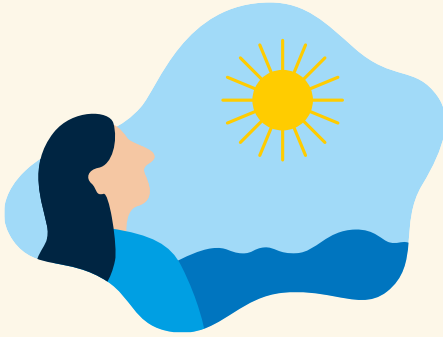
## **You cannot pay the fine? In that case, you can work it off with community service ('gemeinnützige Arbeit').**

Here are a few examples of what you could do:

- Pack or cut things in a workshop
- Take apart and sort electrical items in a repair shop
- Fix bicycles in a bicycle workshop

You can also do this work sitting down if needed.

# Community service – how you benefit



## **You stay out of prison and save time.**

Four hours of community service are equal to a day and a night in prison.

## **You are doing something meaningful for society.**

You will support organisations that help society.



## **You follow a daily schedule.**

The work offers satisfaction and stability. You will receive a work schedule and fixed working hours.

# If you do not act, you will have to go to prison

For more help, drop by the 'Bussenanlaufstelle' (fines information desk).

# Act now Drop by!

You do not need an appointment.  
Just come and see us:

**Bussenanlaufstelle**  
**Kanonengasse 20**  
**8004 Zürich**

You will find the 'Bussenanlaufstelle'  
(fines information desk) on the first  
floor of the 'Werkraum 4' building.

You can also call us if you  
have a question about a fine  
or community service:  
**044 296 80 00**

## Our opening hours

**Monday, Tuesday,  
Thursday**  
**1 pm – 4 pm**

**Wednesday**  
**8:30 am – 11 am and**  
**1 pm – 4 pm**

**Friday**  
**Closed**

